



Capability Statement

LEES TRANSPORT PTY LTD

www.leestransport.com.au

ABN: 86 130 310 851



Quality Certified System
ISO 9001



Environmental
Certified System
ISO 14001



Safety Certified System
AS/NZS 4801
OHSAS 18001



Table of Contents

- 1. Profile**
- 2. Locations**
- 3. Safety, Health and Environment**
- 4. Quality Certification**
- 5. Controlled Waste**
- 6. Weekly Scheduled Services**
- 7. Fleet**
- 8. Technology**
- 9. Business Activities**
- 10. Industrial Projects**
- 10. Key Management Contacts**
- 11. Key Operational Contacts**
- 12. Key Administration Contacts**



1. PROFILE

Lee's Transport is a well-established family owned and operated company with 50% indigenous ownership and one of the foremost heavy haulage and freight companies in Australia. Lee's Transport is based in Western Australia offering an Australia-wide transportation service with an extensive fleet to cover all transport and project requirements. At Lee's Transport we pride ourselves in offering a range of services and benefits that go beyond "just delivering freight". We offer contract transport solutions to all sectors of industry which are sustainable and mutually beneficial.

Being a private company Lee's Transport is capable of being flexible, and reactive, this allows us to undertake commercially viable capital expenditures to underpin our customer's objectives within specific tasks or projects. Lee's Transport has remained resilient through diverse business modelling and is well positioned to continue growing as we support our customer's growth into the future. We focus on customer service and create relationships that are enduring and reciprocal in nature. Lee's Transport look to integrate seamlessly within our customers operations to give them the confidence to focus on other areas of their business knowing their customers logistical KPI's will also be met.

We can provide a full suite of services with strategically positioned yards in Kwinana, Wattleup, Karratha and Brisbane that offer both storage and distribution solutions nationally. One of our biggest value propositions is the ability to save money for our customers within storing and consolidating their cargo into full loads to reduce their overall transport costs.

Lee's Transport understand the very competitive nature of the current market and many companies and contractors are looking at stability from their suppliers. Lee's Transport own approximately 80% of their assets and are in a good position to ride out the slowdown in the market and give our customers the confidence of a long term partner.





2. LEE'S TRANSPORT LOCATIONS

- **Headquarters:**
220 Wattleup Rd,
Wattleup, Western Australia 6166
T: 08 9437 1960
F: 08 9437 1963
- **Karratha Branch:**
1537 Pyramid Rd,
Karratha LIA, Western Australia 6714
T: 08 9185 1300
F: 08 9185 1322
- **Brisbane Depot:**
514 Boundary Rd,
Richlands QLD 4077
T: 08 9437 1960
F: 08 9437 1963
- **Lees Towing & Maintenance:**
31 Yeates Road
Kwinana, Western Australia 6167
T: 08 9439 4459
F: 08 9419 1023





3. SAFETY HEALTH AND ENVIRONMENT

Lee's Transport understands the additional obligations it has to our customer's business, and all facets of our involvement in that business will reflect our robust safety, health and environmental culture in line with our customers' expectations.

Lee's Transport is responsible for enforcing the laws and regulations under this general policy, along with the operating guidelines arising from it, and is applicable to all employees without exception.

Lee's makes occupational health and safety a primary objective in all of their activities. We understand the obligations that we have to ourselves, our employees, our customer's and the general public. All facets of our business will reflect the safety, health and environmental goals of both Lee's and their customers. Each of our operating divisions is responsible for enforcing the laws and regulations under this general policy, along with the operating guidelines arising from that policy.

We are continually improving and developing operating and working methodology to ensure that occupational health and safety objectives are our prime criteria. Lee's has an objective of zero (0) harm in the workplace and the elimination of any risk or danger. We train employees to recognize and monitor hazards so that they can help integrate occupational health and safety standards into all activities.

Our drivers and operators are filtered through our HR screening systems, and verified for competency by our experienced trained operators and management team. They are constantly monitored and their safety and the safety of others is the prime focus at all times. We have a buddy system to help new workers integrate and adopt our safety culture and learn the systems. This fast tracks their understanding and requirements working for Lee's Transport and helps us to turn out industry leading professionals.

We conduct safety toolbox meetings which involve the full staff this is an open and frank discussion on any safety related issues for the workplace and covers any regulatory changes, fatigue issues and significant risk situations such as upcoming weather and or road closures etc. We also use this time to update JHA's and any changes required to standard work procedures as a group.

Our industry has an inherent high risk being on the road with the general public carrying heavy or abnormal loads as well as dealing with differing site expectations from our clients. Our personnel are aware of the significant potential for serious incidents and continue to appraise each other on their safety management and assist with outlining any other potential hazards within other carriers and general industry as they spot them.

SAFETY IS OUR FIRST PRIORITY



4. QUALITY CERTIFIED COMPANY

Lee's Transport is qualified to ISO 9001, ISO 14001, AS/NZS 4001 and OHSAS 18001 standards for Quality, Safety and Environmental systems which form a crucial part of our continuous improvement focus. We can meet or exceed any potential compliancy and regulatory programs for our customers.

The quality standards is a great achievement for Lee's Transport as within the transport industry there is few companies with robust enough systems to acquire this. It supports our traceability of documentation and KPI requirements for contractual purposes, our customer service and it backs up our commitment to our safety systems to ensure we are always dependable and ready for our next opportunity.

With quality accreditation across the full spectrum of safety, environmental and management systems we do not take our responsibility lightly. Our management team works hard to ensure we continue to develop and follow up on our commitment to quality and continuous improvement within all parts of the business.



5. CONTROLLED WASTE

Lee's Transport works in recovery and environmental spills within regulatory guidelines and can support your waste control requirements and offer guidance in the reduction and or control of potential hazards.

Controlled Waste license Number T0053



6. WEEKLY SCHEDULED SERVICES

- *Darwin*
- *Onslow*
- *Karratha*
- *Dampier*
- *Roebourne*
- *Cape Lambert*
- *Goldfields*
- *Wickham*
- *Port Hedland*
- *Newman & Surrounding sites*

7. FLEET

Lee's Transport operates an extensive fleet of vehicles which supports our service delivery.

Our Heavy Haulage fleet can be adapted to carry a large range of abnormal loads across a variety of sizes and weights. We can cover the full spectrum of heavy haulage movements from large plant and equipment, vessels, precast items, steel structures and many other unique loads whilst delivering specific and tailored solutions which include full route surveys and traffic management plans.

Our General Haulage fleet tailors for our standard transport requirements across line haul, palletised cargo, local, regional and interstate movements for general loads. We supply all permits and pilots within our service and look to consolidate loads to reduce the cost for our customers. We also offer storage options and load restraint options for the more difficult loads.

We have a variety of Specialised Equipment which supports project requirements and diversified transport functions from Civil Equipment such as front end loaders, excavators and tippers. A fleet of tow trucks from our sister business, material handling equipment such as a 45t Reach Stacker, cranes, telehandlers and forklifts.

Such extensive fleet capability allows us to offer customers a complete service, from beginning to end; our fleet serves a wide range of sectors covering long and short distance routes across a large spectrum of project requirements and gives our customers a one stop shop for their logistic requirements.

We have a rigorous maintenance and servicing schedule that is integrated within our safe systems of work to keep all our equipment roadworthy and compliant. We are audited regularly by third parties across Oil and Gas, Mining, Construction and a variety of other sectors and have always met the standards required by our customers as either the main or sub-contractor.



Heavy and Oversize Haulage:

- *Block Trucks*
- *12 Line Drake Platform Trailer*
- *10 Line Drake Platform Trailer*
- *8 Line MTE Platform Trailer*
- *6 Line Drake Platform Trailer*
- *100 tonne Low loaders*
- *50 tonne Low Loaders*
- *Specialised Jinkers*
- *Specialised Bolsters for vessels and pipes*
- *Transport Beams*
- *Transport Stools*
- *Jacking and Skating*

General Haulage:

- *Road Trains*
- *B-Doubles*
- *Extendable Drop Deck Trailers*
- *Extendable General Trailers*
- *Tautliners including mezzanine and drop decks*
- *Low Loaders with ramps*
- *Container Side Loaders (20' – 40')*
- *Tilt Slides*
- *Rigid Trucks*
- *Pilot Vehicles*

Specialised Equipment:

- *Class 3 Heavy Duty Tow Trucks*
- *Semi Tilt Slide*
- *Tilt Trays*
- *Cranes*
- *Telehandlers*
- *Forklifts*
- *Reach Stacker*
- *Semi Tippers*
- *Bobcats*

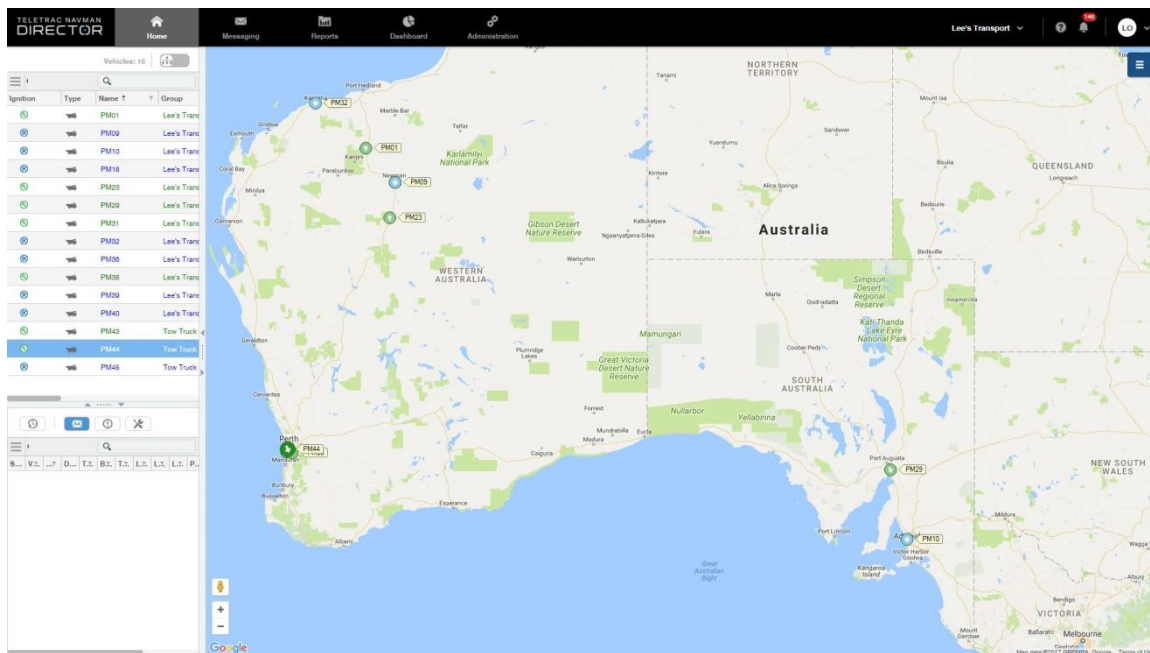


8. TECHNOLOGY

Lee's understand the requirement to integrate technology with transport and in turn, pass the ease, savings and convenience onto our customers. Our fleet boasts a state of the art tracking system, offering real time location of your freight at any given time in any location nationally.

Each truck carries the latest NAVMAN GPS tracking system which is specifically programmed to Lee's Transport requirements. This personalised system gives us the technology to create documents and real time digital POD's as well as monitor drivers fatigue requirements, as well as giving our drivers and coordinators a range of information at their fingertips, all dedicated to completing your job in a safe and timely manner.

We are always looking at innovation and being sustainable in an ever-changing industry, we have invested in Research and Development for the reduction of carbon emissions within our fleet with a hydrogen injection fuel system that will take out the majority of carbon and inject hydrogen with the exhaust being much greener. Another advantage is that it could also reduce fuel burn which would be significant for commercial savings within the industry.





9. LEE'S TRANSPORT BUSINESS ACTIVITIES

- Heavy Haulage
- Heavy Duty Towing
- Line Haul
- Crane Hire
- Storage
- Warehousing
- Distribution
- Project Logistics
- Vessel Discharge
- Project Management
- Wharf Cartage
- Vehicle Recoveries
- Environmental Spills
- General Towing
- Jacking and Skating

Lee's Transport Integrated Solutions makes its customers more competitive by combining high-quality basic freight services into one seamless integrated supply chain solution. In partnering with our customers, we create tailored solutions that meet the challenges of specific industries including Feasibility Studies, Logistics Plans, Logistics Consultancy and Route Surveys

10. LEE'S TRANSPORT INDUSTRIAL PROJECTS

The transportation of industrial infrastructure has never been more daunting with the rapid growth and rapid decline of developing markets and the logistic capacity fluctuations. As a result businesses are increasingly faced with complex onshore and offshore environments. This is also sometimes combined with a vast array of challenging local requirements and regulations.

You will receive realistic, experience-based advice before the project starts and you will be presented with operational excellence the whole way through. You will have accessible, transparent reporting from start to finish. Our state-of-the-art systems will ensure that at every stage of the project, you know what is going on, where, and who to talk to when you have questions.

Every project seems to bring its own set of intricacies; Lee's Transport understands that your project requirements are unique. That is why we do not just provide off-the-rack solutions. We partner with you to develop and manage customised, cost-effective solutions, using highly qualified teams with the technical expertise, local knowledge and the drive needed to get things done.



Projects Completed:

Asiaworld Mazu were contracted by CIMC to discharge 48 oversize transportable units from a vessel at Fremantle Port, store, reload and transport to Kalgoorlie over a 5 day period. Lee's Transport supplied a 45t Reach Stacker and operators working around the clock and coordinated the load out and transport as per client's instruction to achieve the challenging loading and unloading time lines required.

Lee's Transport was contracted by Permacast working for CPB Contracting to supply the Heavy Haulage transport requirements for the Mitchell Freeway extension from Burns Beach to Hester Avenue for WA Main Roads. This project had multiple complexities and outlined our diversity in our project capabilities moving 54 T-Roff Bridge Beams up to 26m long weighing 98t from Cardup through heavy traffic across the Perth metro area to position for installation. Lees completed this task without incident, within the project critical time frame required and on budget.

Freo Group and CBI have utilised Lee's Transport as their main contractor for transport on the Wheatstone Project as a Bechtel approved supplier for the project. We understood the requirements outlined for load restraint on this project as per transport standard regulations and where one of the best performing contractors in regards to compliance on transport requirements across the whole project.

AGC awarded the Transport and Logistics requirements for the Yandi expansion project to Lee's Transport. We successfully delivered 5,500 tonne of structural steel, as well as all the required construction equipment, on budget and without incident, within the required 6 month time span. Upon demobilisation, 85 assorted trailers of equipment were removed from site in 7 days.

Lee's Transport provided all logistics services for CB&I during construction of the LNG Tanks for the Pluto LNG Plant in Dampier. Due to our excellent and incident free record with this project, AGC requested we take over their logistics for the same project. In all, around 10,000 tonne of assorted structural steel and tank shell plate was delivered within a two year period.

Every project seems to bring its own set of intricacies; Lee's Transport understands that your project requirements are unique. That is why we do not just provide off-the-rack solutions. We partner with you to develop and manage customised, cost-effective solutions, using highly qualified teams with the technical expertise, local knowledge and the drive needed to get things done.